



### Updating Your Telescope Firmware

The open architecture of the Meade Autostar/AudioStar permits the update of operating software, the loading of events such as comets, satellites, and minor planets, and allows you to share or "clone" this information with other Autostars/AudioStars.

Depending on the type of Autostar/AudioStar Handbox and Telescope, you will need to use one of three different optional Cable Connector Sets:

**#505 Connector Cable Kit** — for use with all AutoStar/AudioStar equipped telescopes:

All DS Models	All LX65 Models
All DS2000 Models	All LXD75 Models
All ETX Models	All LX80 Models
All StarNavigator Models	All LX85 Models
All StarNavigator NG Models	All LX90 Models
All LXD55 Models	All LT Models



**#507 LX200 Interface Cable** – for use with most AutoStar II equipped telescopes:

All LX200 Models	All LX850 Models
All LX600 Models	All LX850 Models



**USB 2.0 Cable (A to B)** – For use with some AutoStar II and all AutoStar III equipped telescopes.

All LX400/RCX Models	All LS/ETX-LS Models
----------------------	----------------------



**Note:** the #505 cable and #507 cable are RS232 serial cables and do not allow connectivity to USB ports. To connect via USB the additional **# 07507 Meade USB to RS232 Serial Adapter** and **usb driver** is required.



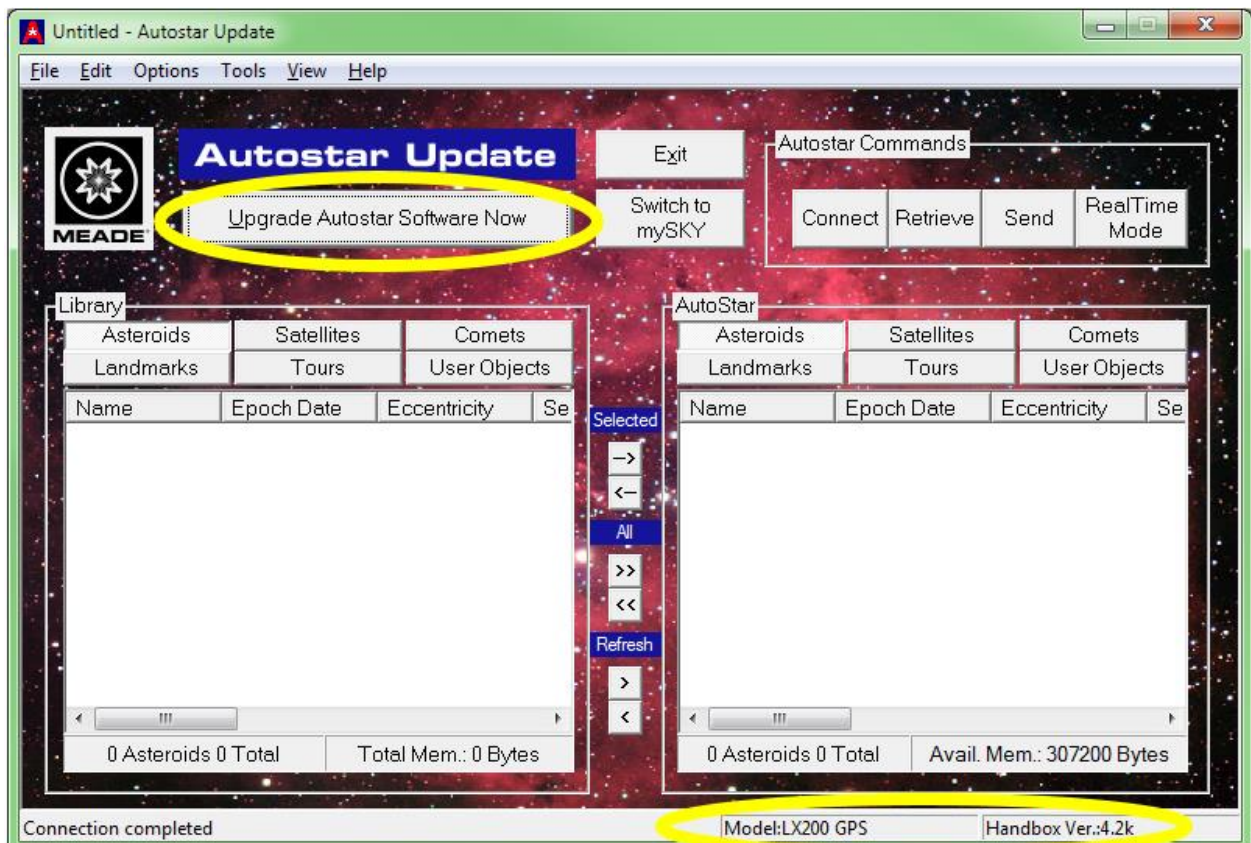
## How to Upgrade Your Handbox

To upgrade your Autostar/AudioStar first click on the link below to download the Autostar Updater (ASU) Client Application for Windows.

### [AutoStar Updater 6.1](#)

If your web browser allows you to open the installation file, you may choose that option when prompted. Otherwise, just save the install file to your local hard disk drive. When downloading is complete, double click on the saved file to start the installation. Follow the instructions provided to install Autostar Update (ASU) on your machine. When installation is complete, start ASU by selecting "Start Menu" -> "Programs" -> "Meade" -> "AutoStar Updater".

If you have an active Internet connection and your telescope with Autostar is connected using the appropriate cable as listed above, ASU will detect and install the correct Autostar code directly from Meade's web site via the "Upgrade Autostar Software Now" button.





### **Autostar Update**

Autostar Update is an application that functions to transfer the event files and software updates from your computer, through the serial port, USB or Connector Cable Set depending on your telescope model. The Autostar Update application is available as a stand-alone client application for Windows. The most recent versions of AutoStar Update automatically check for the newest versions of the AutoStar Updater and download it if necessary. It is critical that you use the most recent AutoStar Updater to ensure that you get the proper software updates for your system.

To transfer event files and software updates, follow the instructions in the manual for your Connector Cable Set.

Note: If you encounter an issue where the latest firmware version is not being retrieved in the ASU, try deleting the contents of the Temporary Internet Files Folder. Instructions to do this can be found here.

<https://support.microsoft.com/en-us/help/260897/how-to-delete-the-contents-of-the-temporary-internet-files-folder>

### **Orbital Elements**

The elements can be saved to your local machine by using your browser's "Save As" facility, ensuring that you select "Plain text" as the format for the saved document. Or you may use the "File" - "Get Object Data from WWW" menu option from within the Autostar Update application.

To enter an individual element into the Autostar, follow the instructions in the online Autostar/AudioStar Manual.